

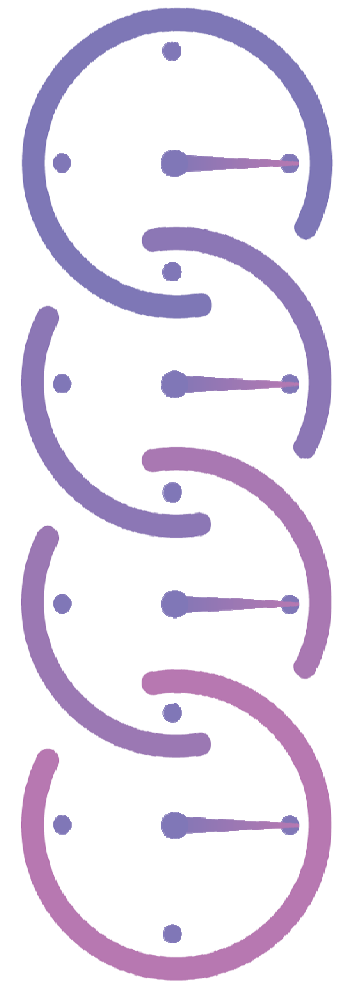
TIME

Rommi, Angelica, Tanner, Aziza, Saulye

What is Time in Relationship to *Alphabet* by Inger Christensen ?

Time is the passage of existence through an ever – continuing cycle of events. With time comes a nonstop motion of spacial actions in a “time continuum”, and the development of both life and lifeless entities.

Alphabet attempts to display the grand effect of humanly actions on the surrounding world’s existence over time. Specifically *Alphabet* exhibits how a nuclear holocaust during the Cold War will affect and continue to damage abiotic and biotic entities on Earth. Time relates to the theme of the longer term damage in relation to those enduring pain and suffering from higher up actions. Although not usually considered upon the decisions of atrocities, time is an imperative aspect to consider when evaluating the long term affects of actions. Christensen attempts to create awareness of time’s influence in long-term actions.

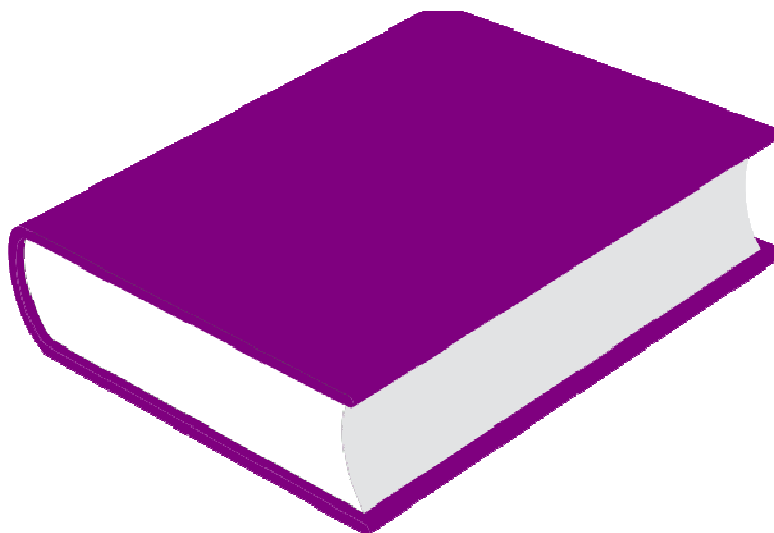


Purpose of the Index

The following index was created to show the literary words or elements in *Alphabet* that pertain to the passage, existence, and flow of time. Time can be related to specific moments in the text such as dates, months, and specific period, or words that describe the passage of time through existence. The index contains both elements to relate historically to the text.

Reading Reflection Statement

As a collective group, we found great interest in the methods conjured to understand the poem. We were first perplexed by the sequence nature of the poem in alphabetical order. To fully understand the poem, it had to be read continuously and closely to find the references carried from the pages before. In comparison to traditional poems, the metaphors and ideas have to be retained as they are alluded later in the poem. Such examples as the existence of apricot trees and hydrogen are repeatedly references within the poem. In addition, the contrast between themes makes the poem especially difficult to understand. Themes such as science and time must be understood in tandem to understand the literary purpose of Christensen's work. A pattern of biblical, mythological, and historical allusions such as Icarus's falling and Juda's kiss towards the beginning of the poem are also referenced in literal meaning near the middle and end. As a reader, the identification of the connection between the metaphorical and literal meanings is crucial to effectively comprehending the poem. Reading in depth but also from a broader perspective analyzes different aspects of the poem that are helpful in comprehension. In depth reading identifies the poet's figurative language while broader reading shows flow between the alphabet letters in the poem. Finally, looking up unknown references and words greatly increased our understanding of Christensen's intentions with the direction of the poem. Instead of blind sighting the reading, we took careful precautions in looking up words such as zenith to find the exact purpose. As a group, we collectively grouped these methods as integral to understanding Christensen's literary meaning in Alphabet.



A

ahead, 29, 37
after, 15 (3), 29, 33
 aftertaste, 22
 afterthought, 22
always, 29, 31, 38, 45, 49,
 64(3), 65, 66, 69, 74
are, 21, 22, 26(2), 29, 30,
 34, 39, 40, 48, 49,
 53(2), 55(2), 56(3),
 57(2), 67, 69, 70, 74,
 77
arrival, 34
at last, 24, 36, 37, 64, 74
 at long last, 22
August
 August 6th, 1945, 24
 August 9th, 1945, 24
 August eleventh, 75

B

become, 29, 50
before, 26 (2), 28, 30, 34
 (2), 36, 56, 66 (2),
 67, 74
 beforehand, 29
beginning/s, 43, 53
born, 28, 36, 53
 borne, 52

C

century/ies, 23, 27
childhood, 37, 67, 76
classic, 73
clocks, 74
counted down, 56

D

day/s, 14 (4), 30 (3), 31, 70
daylight, 58



Courtesy of Futurism (death)



Courtesy of CafePress (clock)



Courtesy of Free Images (fall)

death, 14 (2), 26, 43, 50, 53,
 54, 56 (2), 60 (2), 71,
 deathbed, 51
 dead, 24(2), 27, 29,
 50, 51, 73
 die, 27, 30(2), 35, 42
 (2), 56
 died, 24
 dies, 76
 dying, 24, 30, 51, 74
distant, 24

E

early, 15, 22, 33, 60
endless, 27
 endlessly, 52
eternity, 56 (6), 57 (6)
evening, 26, 29, 32, 37, 57,
 63, 65, 67, 74
ever, 19, 31, 32, 36
everyday, 70
exist, 11 (2), 12 (2), 13 (2),
 14 (4), 15 (7), 16 (10),
 17 (10), 18 (11), 20
 (14), 21 (11), 22 (4),
 23 (4), 24, 26 (4), 30,
 33 (2), 40, 44 (7), 54,
 58, 62 (6), 63

F

fall, 15, 22, 54
finally, 24
first, 24, 28, 41, 51, 70
five o'clock, 66
flash, in a, 30
forever, 24
fossil, 73
 fossilized, 43
future, 15 (2), 67, 73, 75

G

go on, 31 (2), 48

H

half-life/s, 19, 40, 42
happens, 29, 50, 75
 happened, 49
 happening, 31, 47
harvest, 18, 26
history, 18, 26, 34
hour, 66 (2),
 hourless, 22

I

Ice Age, 20 (2), 62 (2)
intervals, 58
is, 19, 21 (6), 26 (2), 27 (2),
 28 (4), 29 (3), 30, 33
 (2), 35 (2), 36, 37 (2),
 38 (3), 40, 41, 42, 43,
 44 (2), 45, 49 (3), 54
 (2), 55, 56, 57, 62,
 63, 64 (5), 65, 66 (5),
 67 (3), 69, 74, 75, 76

J

June, 22(4), 35 (5), 70
 June sixteenth,
 37, 68
 June twentieth, 46
 June 24th, 65
 June 26th, 72

L

last, 18, 22, 24 (2), 34, 36,
 37, 41, 44, 46, 64, 67



Courtesy of Harvest Market Home (harvest)



Courtesy of the British Mountaineering Council



Courtesy of History.com (ice age)

life, 19, 26, 31 (3), 33, 43, 69, 74
 live, 20, 32, 38, 41, 42,
 45, 74
 lives, 45
long, 37, 50, 67
 longer, 66
 long lasting, 52

M

memory, 15 (2), 60, 61
middle, 54
 mid, 34, 35
midst, 17
moment, 28, 73
moon, 18, 27, 44, 63 (2), 75
 half moon, 18
morning, 36, 46 (2), 54, 72
 morningpale, 55
midnight, 48, 50

N

never, 22(3), 26, 29, 35, 56, 66,
 67, 69, 75
night, 23, 62, 76
 nights, 22 (2), 62, 63
now, 41, 44 (3), 52, 54, 56, 73
November, 30, 34

O

old, 38, 57
 oldest, 44
 old fashioned, 17, 73
 old world, 16, 63
once, 53

P

preserved, 52

Q

quick, 45
quickly, 59

R

rate, 75
repeated, 17

S

season, 34
 fall, 15, 22, 54
 harvest, 18, 26
 springtime, 29
 summer, 22, 24, 28,
 33, 34, 54, 57
 (2), 60, 66,
 74
 summerwarm, 55
seconds, 36
 second to second, 71
shifting, 54
slowly, 56, 75
since, 24, 25, 45, 67, 69, 70
sometimes, 45, 50
soon, 38, 45, 66, 67 (2), 74
springtime, 29
standing still, 24
start, 71 (2)
 starts, 67, 76
still, 31, 32 (2), 36, 76
 stillborn, 24
stop, 27
 stopped, 38, 67
 stops, 64(2)
suddenly, 26, 28, 34, 47, 53
summer, 22, 24, 28, 33, 34,
 54, 57(2), 60, 66, 74
summerwarm, 55



Courtesy of VectorStock (waiting)



Courtesy of Clipart Library (years)



Courtesy of VideoHive (Summer)

T

then, 24 (2), 25, 45
ticking, 22, 36, 56
time, 36, 47, 50, 57, 66, 71
today, 69, 70, 75 (3)

U

used, 30, 55, 76

W

waits, 75
 waiting, 66
was, 31, 34 (4), 54, 70 (2),
 73
weekday, 19
when, 21, 22, 27, 28 (2), 29,
 30, 34 (2), 35 (2), 36
 (2), 40, 45, 48, 49 (2),
 50(3), 57, 63, 66, 73,
 76
while, 26, 31 (2), 38 (2), 49,
 56 (2), 57 (2), 66 (2),
 67(2), 73
will, 16, 20 (5), 21 (4), 42, 54
 (2), 56, 57 (2), 67 (2),
 75

Y

years, 67

Z

zenith, 62

Frequency of Parts of Speech in Alphabet

This chart shows the types of words that occur in the text that describe time. For example, an adverb included in the chart is "slowly," because it describes the passage

of time. An interesting thing to notice is that nouns are the most common forms of time, instead of verbs, like one may think.

